

CLOSURE & RECLAMATION

Pebble is committed to conduct all mining operations, including reclamation and closure, in a manner that adheres to socially and environmentally responsible stewardship while maximizing benefits to state and local stakeholders.

PEBBLE: DESIGNED FOR CLOSURE

RECLAMATION

AFTER...

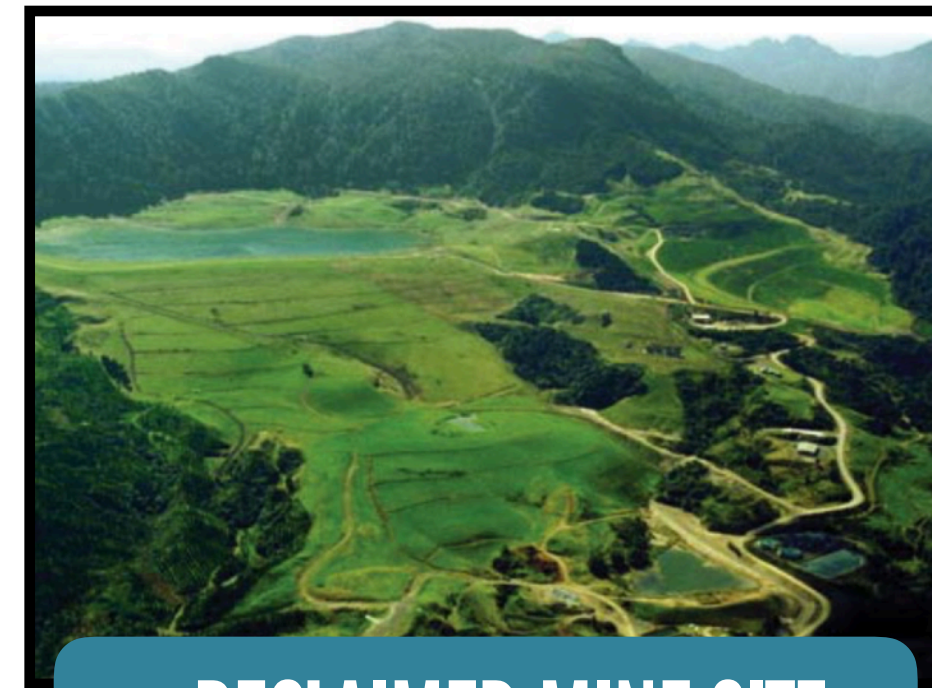
10 YEARS
Most buildings removed
Terrain resculpted
Native plants resown

20 YEARS
Vegetation well reestablished in all reclaimed areas
Tailings pond stocked with non-anadromous fish

30 YEARS
Water quality monitoring continues
Pit has become a lake.



REVEGETATED TAILINGS



RECLAIMED MINE SITE



RECLAIMED OPEN PIT



ONGOING MONITORING



SUMMARY INFORMATION

- Removal of mill and other facilities not required after closure
- Hauling of PAG waste rock into the open pit for sub-aqueous storage
- Recontouring and placement of overburden for revegetation
- Installation of water management features for long-term treatment
- Financial assurance of long-term management is required
- Plan must be updated every five years

SCOPING CONCERNS AND ISSUES

CLOSURE & RECLAMATION

- MAINTENANCE AND MONITORING OF THE TAILINGS STORAGE FACILITIES AND OPEN PIT WILL BE REQUIRED **FOREVER** DUE TO ITS **TOXICITY**
- **SEEPAGE & LEACHATE** MONITORING AND COLLECTION SYSTEMS AND THE WASTE WATER TREATMENT PLANT WILL NEED TO MAINTAINED FOR **FOREVER**
- **WATER** WILL HAVE TO BE CAPTURED AND TREATED FOR **HUNDREDS OF YEARS**
- WEATHERING OF EXPOSED WASTE ROCK AND PIT WALLS WILL PRODUCE **ACID MINE DRAINAGE**
- THE MAINTENANCE AND MONITORING **COSTS** WILL BE HUGE AND WHO WILL TAKE CARE OF THIS ONCE NORTHERN DYNASTY WALKS AWAY?
- A **REALISTIC** RECLAMATION AND CLOSURE PLAN IS NEEDED