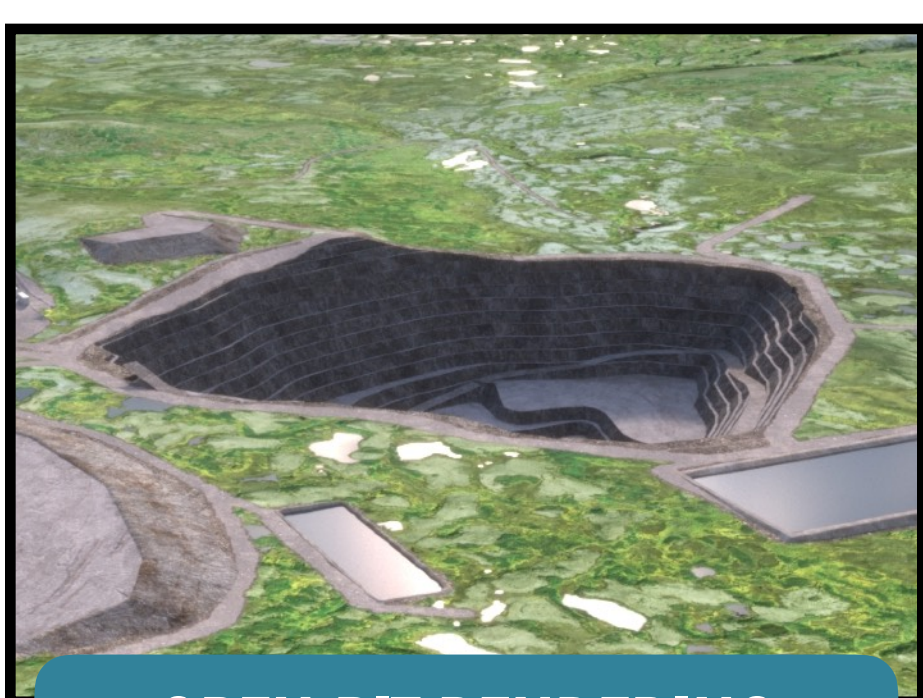
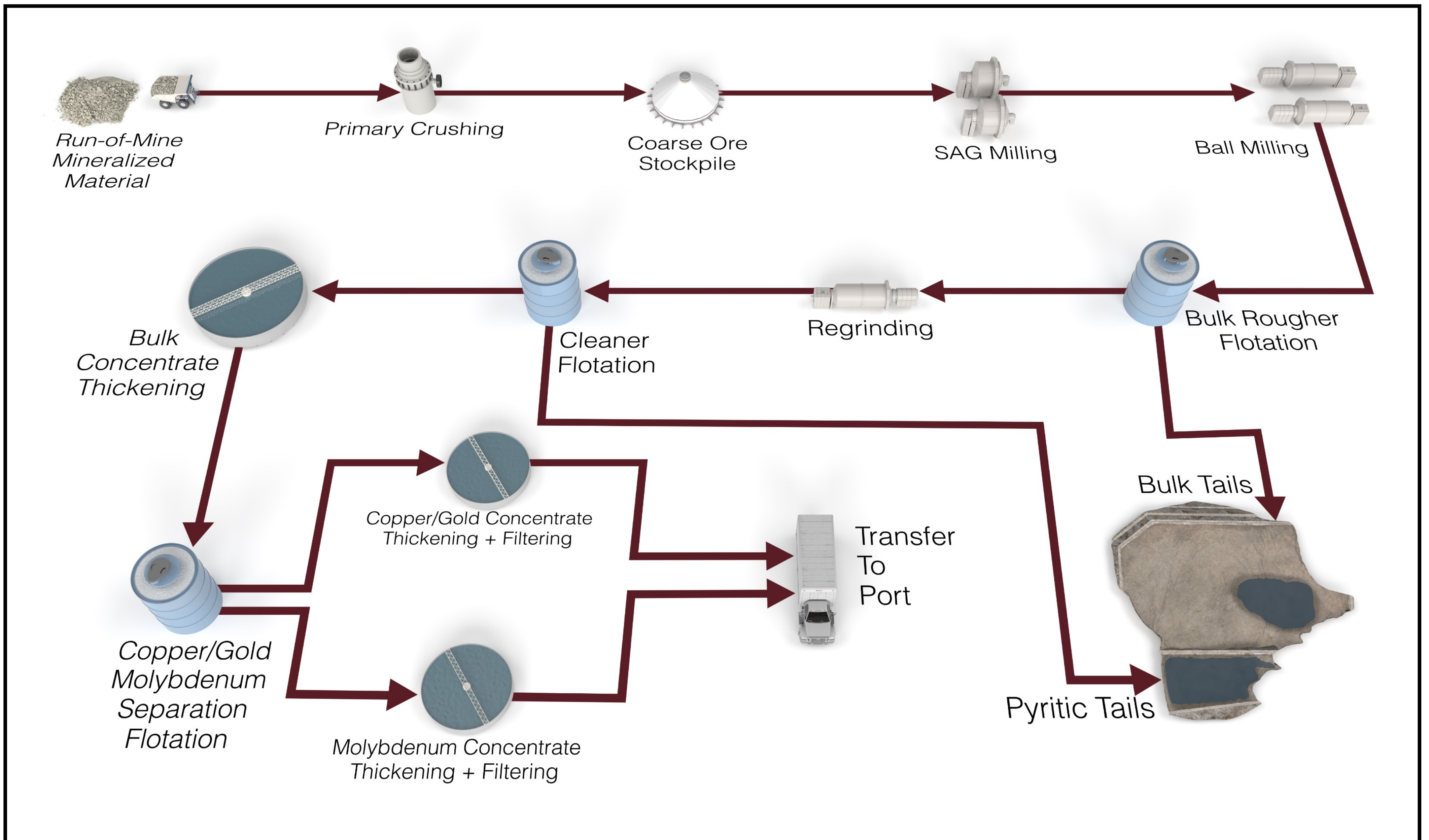


MINING & PROCESSING

The Project will mine approximately 1.1 billion tons of mineralized material over the 20-year mine life.

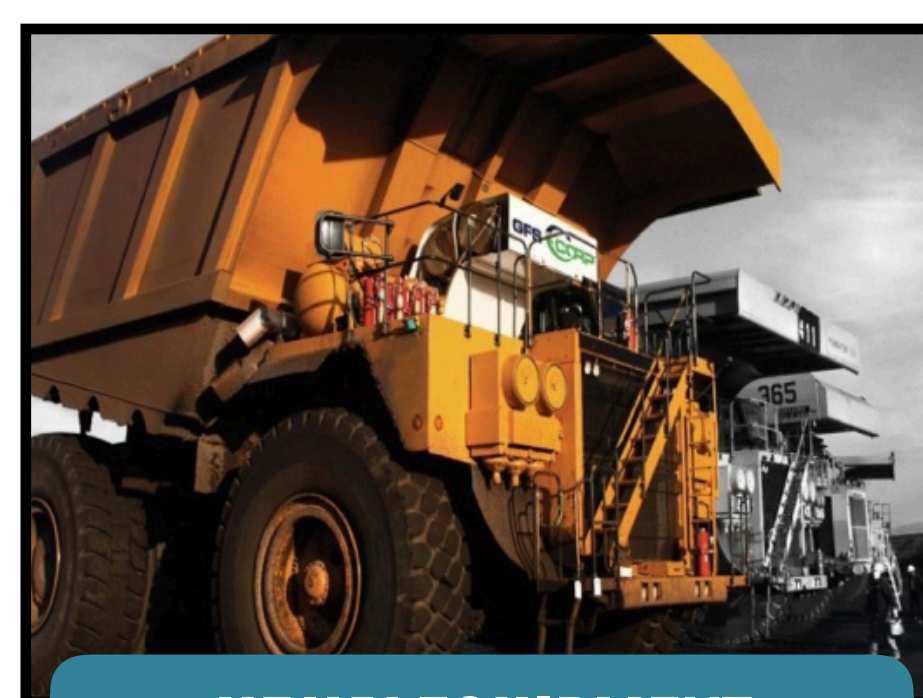
AN OVERVIEW OF MINERAL PROCESSING



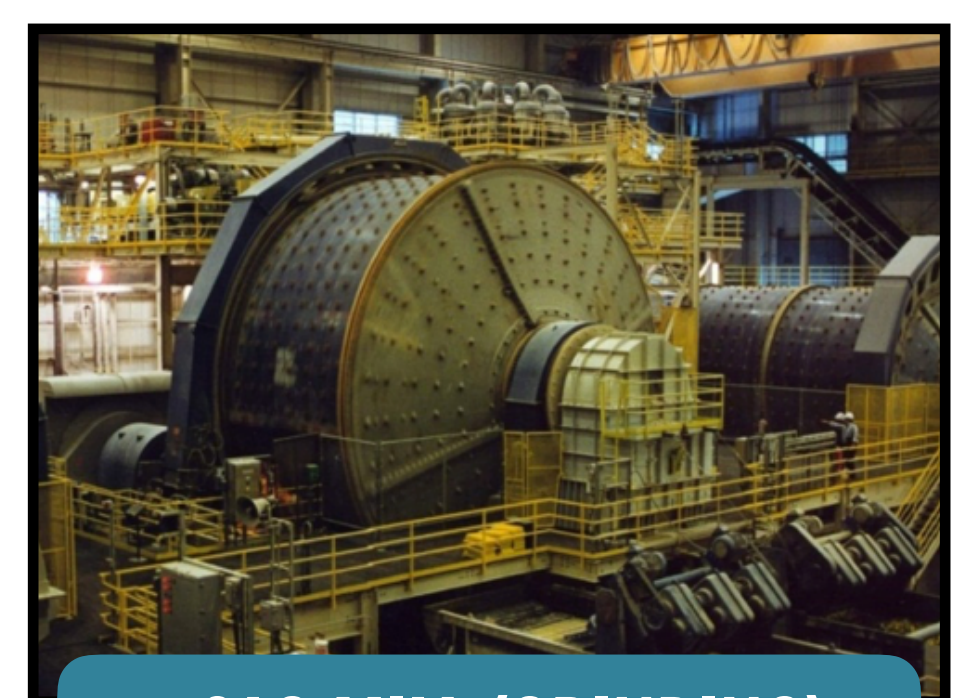
OPEN PIT RENDERING



DRILLING & BLASTING



HEAVY EQUIPMENT



SAG MILL (GRINDING)

SUMMARY INFORMATION

- Mining rate up to 90 million tons per year
- Milling rate up to 58 million tons per year
- Annual copper/gold concentrate of 600,000 tons
- Annual molybdenum concentrate of 15,000 tons

SCOPING CONCERNS AND ISSUES

MINING & PROCESSING

- **HOW MUCH WATER** WILL BE REQUIRED FOR PROCESSING ORE?
- WHAT **CHEMICALS** WILL BE USED AND HOW **TOXIC** ARE THEY?
- WHAT STREAMS WILL HAVE WATER DIVERTED TO THE MINE?
 - POTENTIALLY UP TO 35 BILLION GALLONS/YEAR
- EIS NEEDS TO INCLUDE BUILD-OUT SCENARIOS FOR A **200 YEAR MINING OPERATION** DUE TO THE KNOWN 11 BILLION TONS OF MINERAL RESOURCES
- **ACID MINE DRAINAGE** FROM WASTE ROCK WILL BE GENERATED AND CAN HARM THE STREAMS AND WETLANDS IN THE AREA
- MINING OPERATION WILL HAVE SIGNIFICANT IMPACTS IN THE AREA DUE TO **TRUCK** TRAFFIC, NOISE FROM **BLASTING**, DUST IMPACTS, **AIR QUALITY** FROM POWER PLANT