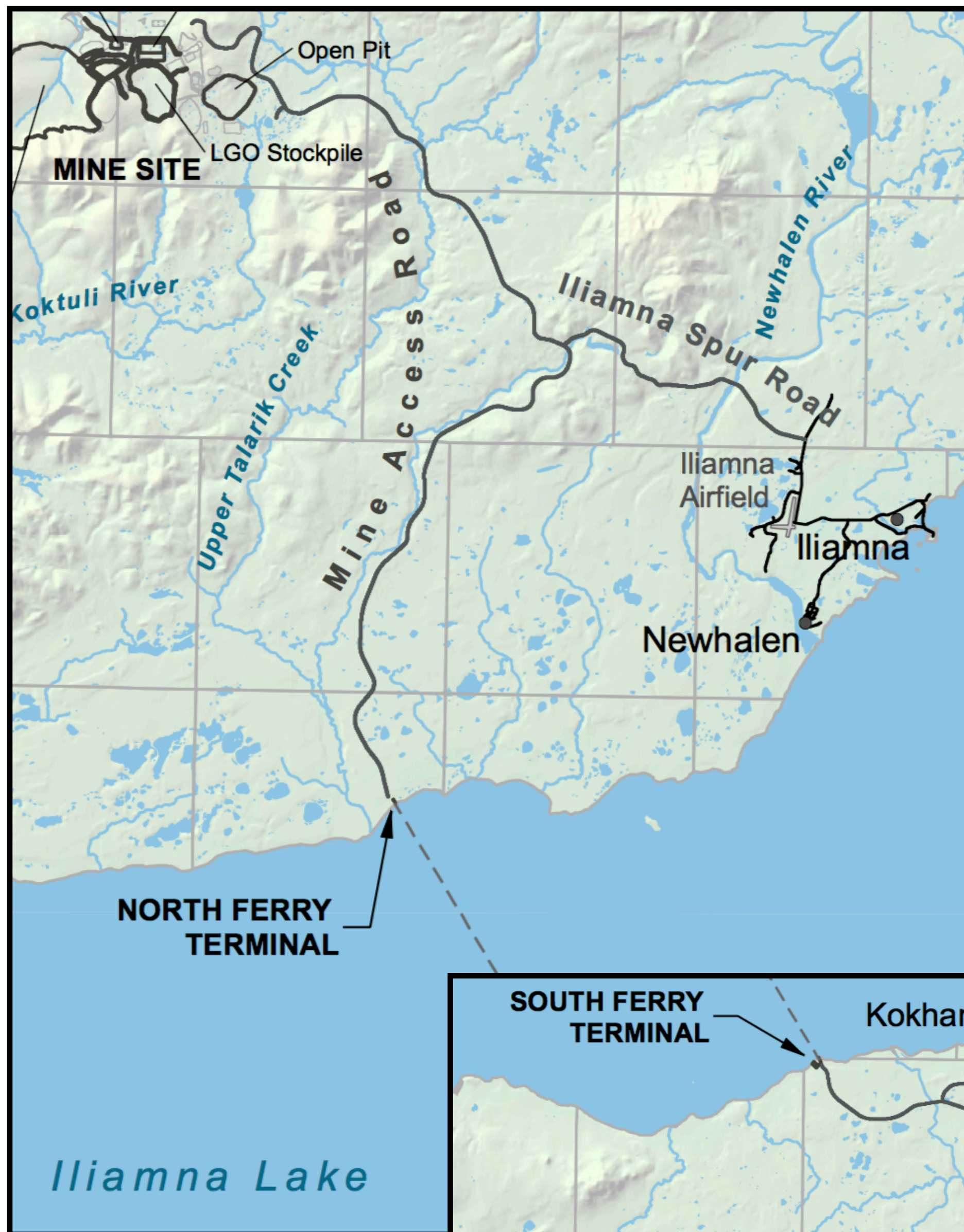


# ROADS & TRANSPORT

5 ROADS

83-mile transportation corridor from the mine site to a port site on Cook Inlet. The route was selected to minimize impact on wetlands, minimize stream crossings, and avoid area of known subsistence and recreational use.

## NORTH & SOUTH ROAD SEGMENTS



TRANSPORT BY TRUCK



HAULING CONTAINERS



SEALED FUEL HAUL



SALMON FRIENDLY



## SUMMARY INFORMATION

- Personnel flown to Iliamna airport and driven to mine site
- 30-mile (north segment) and 35-mile (south segment) private roads
- Spur roads connecting to the villages of Iliamna, Newhalen, and Kokhanok
- Stream crossings designed to ADOT&PF and ADF&G standards
- Up to 35 round trips by truck each day (one by ferry)
- Concentrate hauled in bulk containers with locking lids
- Fuel hauled in 6350 gallon ISO tank containers

# **SCOPING CONCERNS AND ISSUES**

## **ROADS & TRANSPORT**

- **ROAD WILL CROSS MANY SALMON STREAMS, WETLANDS, AND SUBSISTENCE AREAS**
  - **OVER 200 CULVERTS WILL IMPACT FISH PASSAGE. CULVERTS NEED TO BE 'FISH FRIENDLY'**
  - **NO FISH SURVEYS TO IDENTIFY SALMON STREAMS HAVE BEEN PROVIDED FOR THE SOUTH ACCESS ROAD**
  - **OVER 1,000 ACRES OF WETLANDS WILL BE IMPACTED BY ROADS**
  - **INCREASES IN NOISE, DUST, AND TRAFFIC**
  - **HABITAT FRAGMENTATION WILL OCCUR DUE TO ROADS CROSSING MIGRATION CORRIDORS**