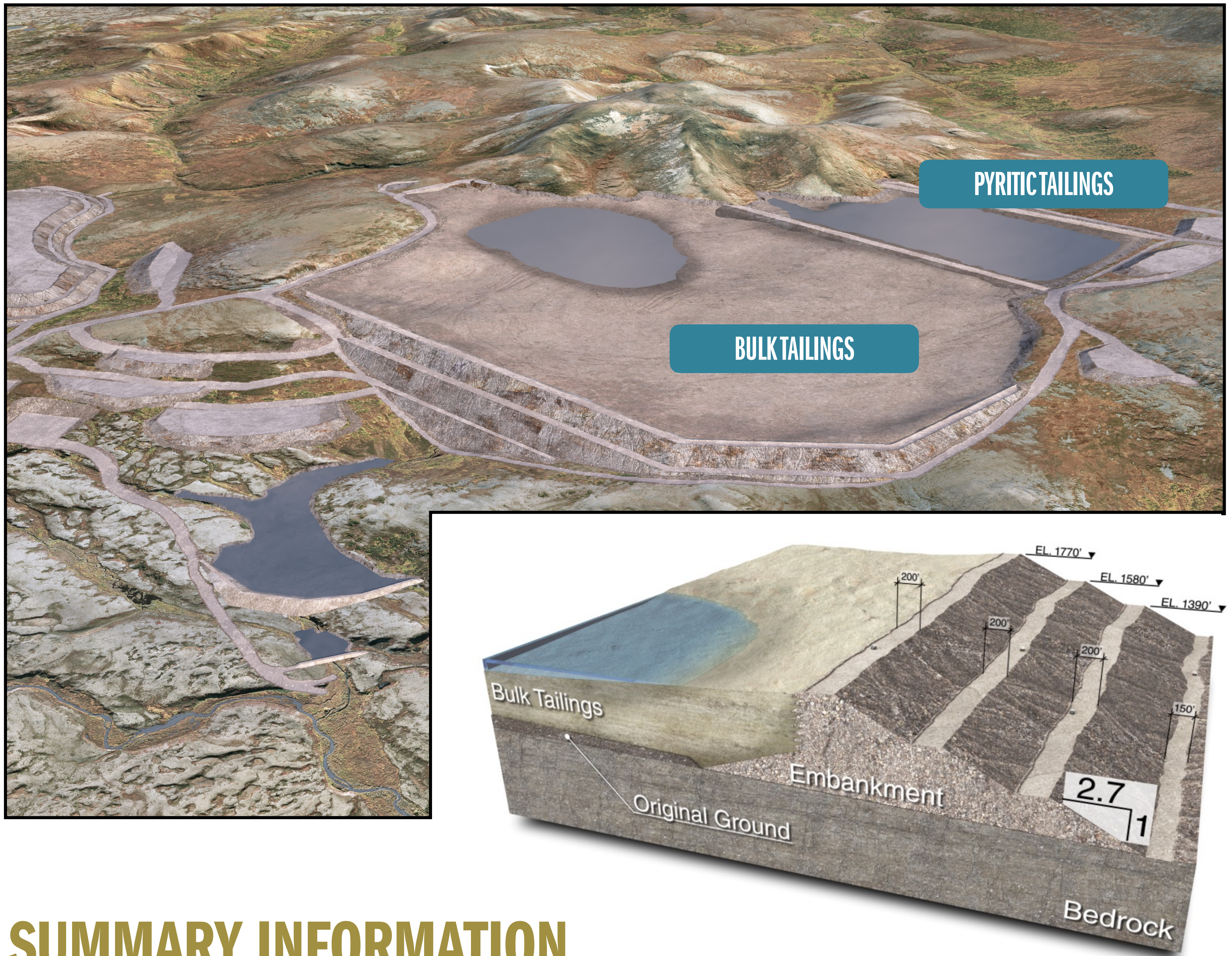


TAILINGS STORAGE

3 TAILINGS

PLP conducted a multiyear, multidisciplinary evaluation to select a Tailings Storage Facility location that meets all engineering and environmental goals. It will store the ground-up material sent from the mill after minerals have been extracted.

TAILINGS STORAGE FACILITY



SUMMARY INFORMATION

- Designed to meet Alaska Dam Safety Program standards
- Separate cells for bulk and pyritic tailings
- Minimize water on bulk tailings to keep water away from embankment
- Fully-lined cell for pyritic tailings with water cover
- Rock-filled dam embankments (600' at main embankment)
- Seepage collection facilities for all embankments

SCOPING CONCERNS AND ISSUES

TAILINGS STORAGE

- **PERPETUAL STORAGE** OF ACID GENERATING TAILINGS BEHIND EARTHEN DAMS IS PROBABLY THE SINGLE **GREATEST HAZARD** POSED BY THIS PROJECT
- TAILINGS STORAGE FACILITIES WILL BE UNLINED AREAS THAT WILL ALLOW **TOXIC** LEACHATE TO MIGRATE TO GROUNDWATER AND SURFACE WATER
- HUGE DAM EMBANKMENTS UP TO **600 FEET HIGH** WILL **BLOCK AND INUNDATE** SALMON STREAMS AND TRIBUTARIES IN THE NORTH FORK KOKTULI