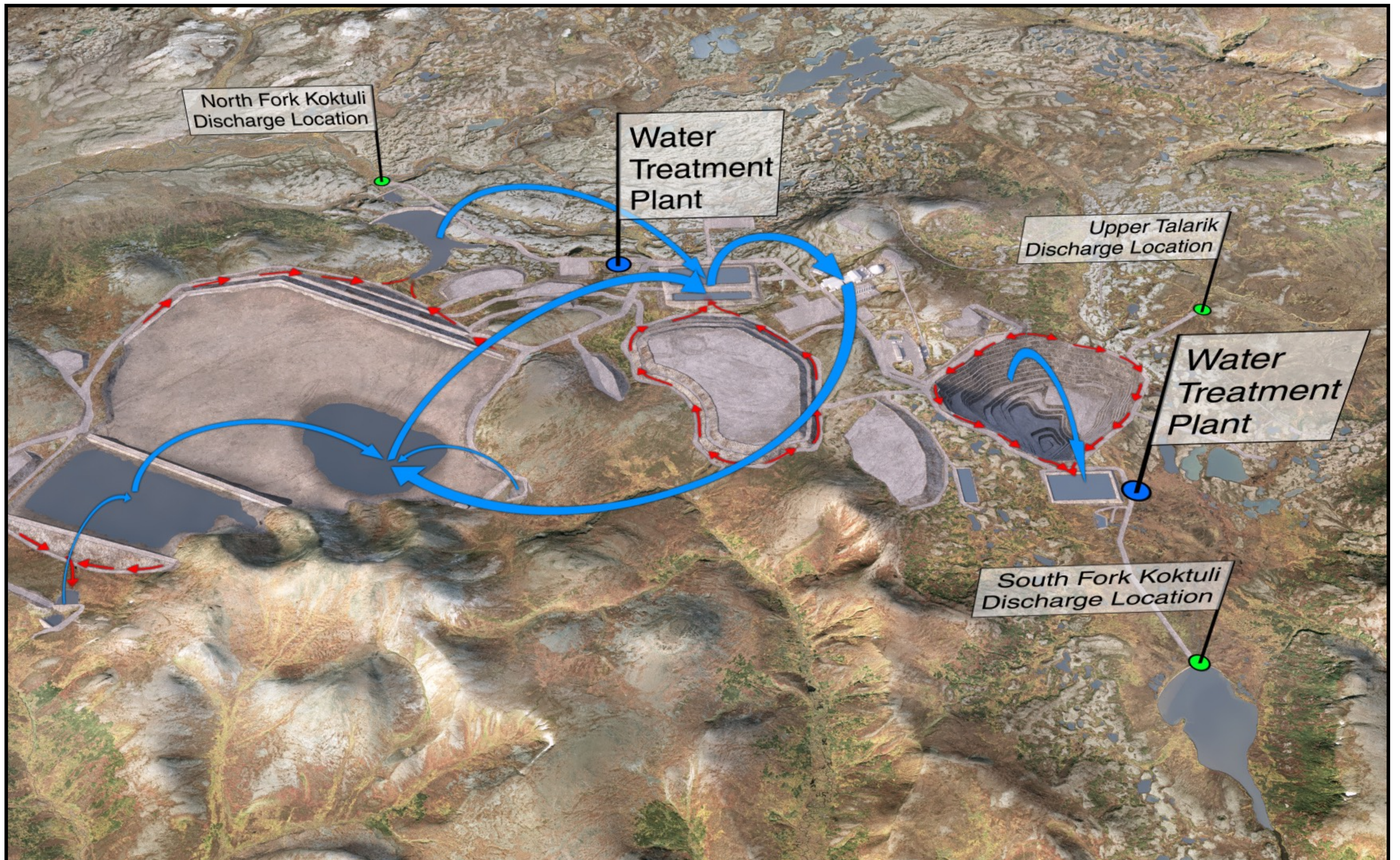


WATER MANAGEMENT

Pebble has designed the water management plan to minimize the volume of water diverted from natural flows.

MONITORING AND TREATMENT



SUMMARY INFORMATION

- All water is tracked and managed from rainfall to discharge
- One treatment plan for mine pit related water
- One treatment plant for tailings stockpile, and process contact water
- All water treated and conditioned to quality standards before release
- Three discharge locations in UTC, NFK, and SFK drainages
- No mixing zones will be required
- Discharge managed based on downstream habitat needs

SCOPING CONCERNS AND ISSUES

WATER MANAGEMENT

- **NO WATER MANAGEMENT PLAN** PROVIDED IN 404 APPLICATION TO THE USACE
- **HOW MUCH WATER WILL BE NEEDED** FOR MINE OPERATIONS?
- **SIGNIFICANT IMPACTS WILL OCCUR BY DIVERTING WATER FROM SALMON STREAMS** FOR MINE OPERATIONS
 - **Stream impacts will occur during summer salmon spawning and rearing periods & during winter when salmon are over-wintering and eggs are incubating in these streams**
- **SIGNIFICANT IMPACTS WILL OCCUR DOWNSTREAM OF THE MINE FROM WATER BEING DISCHARGED WITH DIFFERENT TEMPERATURES, WATER CHEMISTRY, AND FLOW RATES** THAN THE NATURAL CONDITIONS IN THE HEADWATER STREAMS
- **SIGNIFICANT IMPACTS TO GROUNDWATER AND SURFACE WATER** CAUSED BY DEWATERING OF THE OPEN PIT